

## ANNALS OF THE NEW YORK ACADEMY OF SCIENCES

Issue: *Barriers and Channels Formed by Tight Junction Proteins***Myosin light chain kinase: pulling the strings of epithelial tight junction function**

Kevin E. Cunningham and Jerrold R. Turner

Department of Pathology, the University of Chicago, Chicago, Illinois

Address for correspondence: Jerrold R. Turner, M.D., Ph.D., Department of Pathology, the University of Chicago, 5841 South Maryland, MC 1089, Chicago, IL 60637. [jturner@bsd.uchicago.edu](mailto:jturner@bsd.uchicago.edu)

Dynamic regulation of paracellular permeability is essential for physiological epithelial function, while dysregulated permeability is common in disease. The recent elucidation of the molecular composition of the epithelial tight junction complex has been accompanied by characterization of diverse intracellular mediators of paracellular permeability. Myosin light chain kinase (MLCK), which induces contraction of the perijunctional actomyosin ring through myosin II regulatory light chain phosphorylation, has emerged as a key regulator of tight junction permeability. Examination of the regulation and role of MLCK in tight junction dysfunction has helped to define pathological processes and characterize the role of barrier loss in disease pathogenesis, and may provide future therapeutic targets to treat intestinal disease.

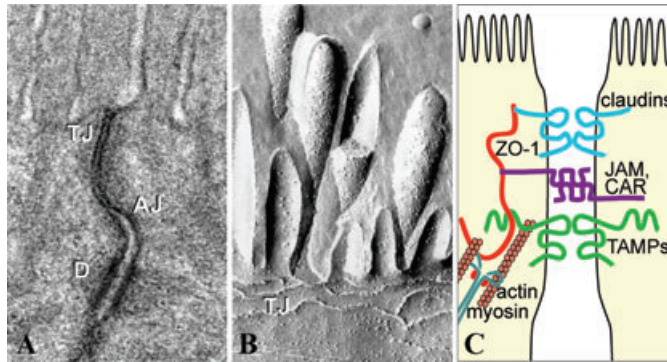
**Keywords:** tight junction; myosin light chain kinase; TNF- $\alpha$ ; inflammatory bowel disease

**Introduction**

Epithelial cells serve an essential role in homeostasis by providing and regulating the physical barrier between tissue compartments.<sup>1</sup> In the intestine, the epithelium forms a barrier between the sterile tissues and the harsh environment of the lumen. This barrier must be selectively permeable to allow the absorption and secretion of large volumes of solutes and fluids while preventing flux of pathogens and xenobiotic materials. In addition, it is now clear that barrier function is dynamic and can be regulated by a variety of physiological and pathophysiological stimuli.<sup>2</sup> The apical and basal plasma membranes of mechanically linked epithelial cells form the majority of the barrier surface and constitute the transcellular barrier, but the space between adjacent cells, that is, the paracellular space, must also be sealed to maintain the continuity of the barrier. Throughout the gastrointestinal tract, the *transcellular* and *paracellular* routes are used for transport of solutes and fluids through and between epithelial cells. Specific pumps, transporters, and channels on the apical and basolateral plasma membranes facilitate transcellular transport. In contrast,

paracellular transport is passive, occurring down electrochemical gradients established either by the activity of the transcellular transporters or by external events, such as ingestion and luminal digestion of nutrients.

Paracellular transport is regulated by an intercellular seal formed by two main protein complexes located at the apical-most part of the lateral membrane, collectively termed the apical junctional complex (Fig. 1).<sup>3</sup> The adherens junction, which contains cadherin and catenin proteins, is linked to the dense ring of perijunctional actin and myosin that underlies the apical junction complex. While critical for structural integrity, the adherens junction does not contribute to sealing of the paracellular space. The tight junction, which is located just apical to the adherens junction, is the essential determinant of paracellular flux.<sup>4,5</sup> Tight junction-associated proteins, including the claudin family and occludin,<sup>6</sup> and the specialized lipid composition of local membranes<sup>7</sup> form a seal that limits paracellular flux. As with the adherens junction, the tight junction protein complex is bound to the perijunctional actomyosin ring<sup>8</sup> by direct and indirect protein-protein interactions.<sup>9,10</sup> As discussed



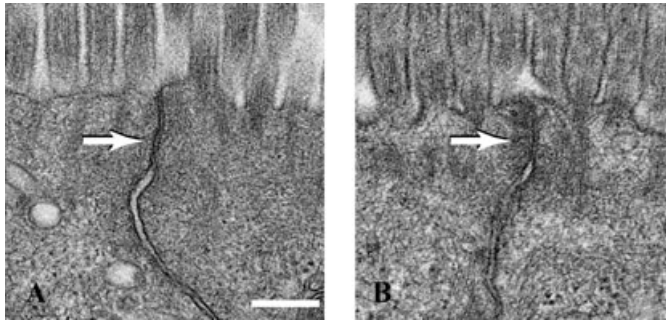
**Figure 1.** The apical junctional complex. (A) Transmission electron micrograph shows the tight junction (TJ), located most apically; the adherens junction (AJ), located below; and desmosomes, D, located basolaterally. (B) Freeze-fracture electron microscopy shows that the TJ is composed of particulate intramembranous strands. (C) Diagrammatic representation of the apical junctional complex. Myosin and actin interact with the tight junction through plaque proteins, such as ZO-1. Integral membrane proteins, including junctional adhesion molecules (JAM), Coxsackie adenovirus receptor (CAR), and TJ-associated MARVEL proteins (TAMPs), such as occludin, bridge the intercellular space. Figure reproduced from Shen *et al.*<sup>72</sup> with permission.

below, these interactions are critical to tight junction structure and function.<sup>11–13</sup>

### Myosin light chain kinase

Original studies assumed that the tight junction was a static barrier. However, demonstration of rapid modulation of structure and barrier function by plant cytokinins, compounds derived from purines, suggested the possibility of physiological tight junction regulation. This was subsequently described as a consequence of  $\text{Na}^+$ -nutrient cotransport in mammalian small intestine.<sup>14–19</sup> However, the contribution of the paracellular pathway to overall nutrient and water absorption was considered controversial.<sup>20–25</sup> Many reasons exist for the failure of some studies to demonstrate paracellular water and nutrient absorption, most of which reflect technical issues and, potentially, the species studied.<sup>24,25</sup> The clearest *in vivo* example of the role of physiologic tight junction regulation in paracellular glucose transport is provided by a perfusion study of rat jejunum.<sup>26</sup> This work showed that D-glucose absorption over a wide range of perfusate concentrations could only be explained as the sum of active (i.e., transcellular) and passive (i.e., paracellular) transport.<sup>26</sup> As discussed below, *in vivo* perfusion studies of mouse jejunum have confirmed the critical contributions of tight junction regulation and paracellular transport to overall nutrient and water absorption in health and disease.

While the study of intact tissue, either *in vivo* or *ex vivo*, was critical to the initial demonstration of tight junction regulation, it was not suitable for investigation of the underlying mechanisms. However, the study of intact tissue did provide one essential clue. Ultrastructural analyses showed that  $\text{Na}^+$ -glucose cotransport-induced tight junction regulation was associated with perijunctional actomyosin condensation.<sup>15,18,27</sup> This led to the hypothesis that perijunctional actomyosin contraction might regulate the tight junction barrier function. Development of a model for the study of  $\text{Na}^+$ -glucose cotransport-induced tight junction regulation in cultured epithelial monolayers demonstrated that permeability was affected in a size-selective manner, that is, permeability to small, but not large, molecules was increased.<sup>28</sup> This model also allowed biochemical analysis, which revealed increased myosin II regulatory light chain (MLC) phosphorylation, a biochemical marker of actomyosin contraction, following  $\text{Na}^+$ -glucose cotransport activation.<sup>28</sup> Further, pharmacological inhibition of myosin light chain kinase (MLCK) prevented  $\text{Na}^+$ -glucose cotransport-induced tight junction regulation, both in cultured monolayers and isolated rodent mucosae.<sup>28</sup> Subsequent *ex vivo* analyses confirmed  $\text{Na}^+$ -glucose cotransport-induced tight junction regulation in human jejunum, and quantitative fluorescence microscopy demonstrated MLC phosphorylation within the perijunctional actomyosin ring of absorptive enterocytes within these tissues. Thus, MLCK-dependent MLC phosphorylation is



**Figure 2.** T cell activation induces perijunctional actomyosin condensation. The tight junctions (arrows) of jejunal villous enterocytes within control (A) and anti-CD3–treated (B) mice. Note the perijunctional cytoskeletal condensation induced by T cell activation. Figure reproduced from Clayburgh *et al.*<sup>33</sup> with permission.

an essential intermediate in physiological tight junction regulation.

### MLCK is necessary for TNF- $\alpha$ –induced barrier loss

A role for the cytoskeleton in pathophysiological tight junction regulation was first suggested by the observation that MLC phosphorylation is markedly increased following infection with enteropathogenic *Escherichia coli*.<sup>29</sup> Shortly thereafter, a role for MLCK in tight junction dysfunction induced by tumor necrosis factor (TNF- $\alpha$ ) was defined.<sup>30</sup> Analyses of cultured monolayers demonstrated TNF- $\alpha$ –induced barrier loss could be corrected acutely using a highly specific pseudosubstrate peptide MLCK inhibitor.<sup>31</sup> Further study demonstrated that TNF- $\alpha$  activated MLCK by at least two separate mechanisms: increased transcription and increased enzymatic function.<sup>32</sup>

While some details of TNF- $\alpha$ –induced barrier loss are best identified using highly manipulable *in vitro* models, determination of the effect on transepithelial transport requires use of *ex vivo* or *in vivo* models. Thus, an *in vivo* perfusion system was developed to allow quantitative analysis of barrier function and fluid transport in neurovasculature intact mouse jejunum.<sup>33</sup> Mice were treated with anti-CD3 to activate T cells systemically.<sup>34</sup> This induced jejunal barrier loss and reversal of net fluid movement, from absorption to secretion, in a TNF- $\alpha$ –dependent manner.<sup>33,35</sup> Ultrastructural examination revealed that this was associated with perijunctional actomyosin contraction (Fig. 2) similar to that induced by Na<sup>+</sup>-glucose cotransport, and phosphorylation of perijunctional MLC.<sup>33</sup> Further-

more, mice lacking long MLCK, the intestinal epithelial MLC isoform,<sup>36</sup> or mice treated with the peptide inhibitor of MLCK failed to phosphorylate intestinal epithelial MLC and were protected from both barrier loss and fluid secretion.<sup>33</sup> Thus, MLCK is critical effector of pathological barrier dysfunction *in vivo*.

### MLCK regulation in the gastrointestinal tract

The emergence of MLCK as a critical regulator of epithelial paracellular permeability has provided an opportunity to prevent intestinal barrier dysfunction in experimental models and examine the potential therapeutic benefit of this intervention. As noted above, TNF regulates MLCK transcription and enzymatic activity.<sup>31,32,37</sup> Moreover, MLCK is expressed in intestinal epithelia as two splice variants. Short, or smooth muscle, MLCK<sup>38</sup> is not expressed in intestinal epithelia.<sup>36</sup> Long MLCK is derived from the same gene as short MLCK, but uses an upstream promoter that gives rise to 5' transcriptional and translational start sites and additional amino terminal protein sequence.<sup>38</sup> Two long MLCK isoforms, MLCK1, or full-length long MLCK, and MLCK2, which lacks a single exon within the unique, long MLCK upstream sequences, are expressed in intestinal epithelia. These splice variants have distinct subcellular localizations and functions,<sup>36</sup> and their expression is differentially regulated during epithelial differentiation. MLCK1 is predominantly expressed in villous epithelium, while MLCK2 is expressed throughout the crypt villus axis. Moreover, MLCK1 is concentrated at the perijunctional actomyosin ring and specific MLCK1

knockdown increases barrier function.<sup>36,39</sup> Finally, the ability of cultured intestinal epithelial monolayers to regulate barrier function after initiation of Na<sup>+</sup>-glucose cotransport, which develops during enterocyte differentiation, coincides with the onset of MLCK1 expression.<sup>36</sup> Given that MLCK participates in multiple cellular processes, MLCK1 may be the preferred molecular target for therapeutic MLCK inhibition.

Despite the unique role of MLCK1 in tight junction regulation, MLCK1 and MLCK2 transcription appear to be activated similarly by TNF- $\alpha$ .<sup>37</sup> There has been debate regarding the signaling events that lead to increased MLCK transcription. The first study examining this found that inhibitors of NF- $\kappa$ B could block TNF- $\alpha$ -induced MLCK upregulation at extremely low concentrations.<sup>32</sup> In contrast, NF- $\kappa$ B inhibition required use of these agents at significantly greater doses that actually enhanced TNF- $\alpha$ -induced barrier loss.<sup>32</sup> A subsequent study suggested that NF- $\kappa$ B was critical to TNF- $\alpha$ -induced MLCK upregulation.<sup>40,41</sup> Although both of these studies used the Caco-2 intestinal epithelial cell line, which is derived from a human colonic adenocarcinoma, the first used the well-differentiated, absorptive (surface) enterocyte-like BBe subclone,<sup>31,32,42</sup> while the second study used the less well-differentiated parent line.<sup>40,41</sup> A detailed analysis of the human long MLCK promoter showed that this discrepancy likely explains the difference in mechanism of transcriptional regulation.<sup>37</sup> While the promoter was responsive to both AP-1 and NF- $\kappa$ B, the data show that TNF preferentially activates NF- $\kappa$ B in poorly differentiated monolayers and AP-1 in well-differentiated monolayers.<sup>37</sup> While activation of MLCK transcription by TNF has been demonstrated *in vivo*,<sup>37,39</sup> the mechanism of transcriptional regulation has not been defined. However, transgenic mice expressing an epithelial-specific I $\kappa$ B $\alpha$  mutant, which functions as an NF- $\kappa$ B super repressor, were protected from anti-CD3-induced tight junction regulation.<sup>43</sup>

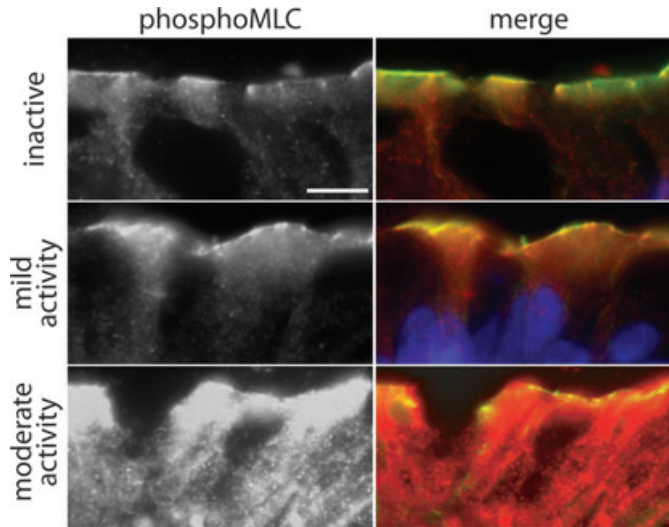
A plethora of studies have identified distinct mechanisms to control MLCK expression and activity, which appear to be altered in disease states. While numerous groups have shown that MLCK phosphorylates MLC at Ser19, the regulation of MLCK expression in disease is less well defined. Perhaps with greatest relevance to inflammatory bowel disease (IBD), numerous studies have established the abil-

ity of inflammatory cytokines TNF- $\alpha$  and interferon (IFN)- $\gamma$ , which are elevated in Crohn's disease, to induce barrier loss *in vitro*. Critically, TNF- $\alpha$  and IFN- $\gamma$  inhibition can reverse barrier loss and substantially reduce inflammation in patients and animal models. *In vitro* monolayers primed with IFN- $\gamma$  respond to TNF- $\alpha$  by decreasing barrier function and increasing MLC phosphorylation. Barrier function was restored by specifically inhibiting MLCK, suggesting that MLCK activity was responsible for the loss of barrier function.<sup>31</sup> The molecular mechanism leading to increased MLCK activity was subsequently studied in this model and it was found that MLCK protein<sup>32</sup> and gene<sup>37</sup> expression was also increased by IFN- $\gamma$ /TNF- $\alpha$ , and corresponded with increased MLC phosphorylation. Thus, MLCK was found to be inducible by TNF- $\alpha$ , uncovering a novel mechanism of epithelial barrier regulation by the cytokine. Crucially, this observation is supported by patient data. In intestinal resections and biopsies, MLCK expression was slightly increased in ileal epithelia of patients with inactive Crohn's disease, and this increased further in active disease, correlating with histological disease activity.<sup>39</sup> MLC phosphorylation was also increased in colonocytes of patients with active disease (Fig. 3). Taken together, these studies provide key insight into the regulation of MLCK by inflammatory cytokines and the role of MLCK in IBD-associated epithelial barrier loss.

### Mechanism of MLCK-dependent barrier regulation

While the data above demonstrate that MLCK is a critical mediator of tight junction barrier function, the downstream events activated by MLCK are only beginning to be defined. First, while Na<sup>+</sup>-glucose cotransport and TNF- $\alpha$  both regulate tight junctions by MLCK-dependent processes, each has a distinct impact on barrier function. Na<sup>+</sup>-glucose cotransport induces a size-selective increase in permeability that is limited to small molecules.<sup>25,27,28</sup> In contrast, TNF- $\alpha$ -induced increases in paracellular flux of small and large molecules.<sup>32,33,45</sup>

Inducible expression of constitutively active MLCK in cultured intestinal epithelia caused a size-selective increase in permeability similar to that following initiation of Na<sup>+</sup>-glucose cotransport.<sup>46</sup> Detailed analysis of the tight junction structure in these monolayers demonstrated MLCK-dependent reorganization of perijunctional actin, occludin,



**Figure 3.** Myosin light chain (MLC) phosphorylation is correlated with inflammatory activity in IBD. Phosphorylated MLC (red) is primarily detected at the perijunctional actomyosin ring (green) in biopsies without active disease. While still predominantly within the perijunctional actomyosin ring, the intensity of phosphorylated MLC detection is markedly enhanced with increasing disease activity. Matched exposures are shown. Bar = 5  $\mu$ m. Figure reproduced from Blair *et al.*<sup>39</sup> with permission.

and ZO-1.<sup>46</sup> The normally smooth, arc-like tight junction profiles viewed *en face* were modified to irregularly undulating profiles after MLCK activation.<sup>46</sup> This resulted in a nearly 20% increase in tight junction length that, by virtue of an increase in potential paracellular channels, could partially explain the MLCK-induced increase in paracellular flux. This may have also been associated with a change in lipid composition of tight junction membrane microdomains, as occludin was redistributed to a higher density population of glycolipid- and cholesterol-rich membranes.<sup>46</sup> However, given the critical role of claudins in defining paracellular permeability,<sup>47–51</sup> it is notable that neither the *en face* profiles nor density of membranes containing claudin-1 and claudin-2 were affected by MLCK activation.

To better understand the mechanism of physiological MLCK-dependent barrier regulation, the dynamic behaviors of occludin, ZO-1, claudin-1, and actin were examined in monolayers with active  $\text{Na}^+$ -glucose cotransport.<sup>52,53</sup> MLCK inhibition markedly reduced ZO-1 exchange between tight junction and cytosolic pools, but did not affect dynamic behavior of other tight junction proteins or perijunctional actin.<sup>53</sup> Exchange of a ZO-1 mutant lacking the actin binding region was not af-

ected by MLCK inhibition, thereby demonstrating that this domain mediated the observed increased in ZO-1 anchoring.<sup>53</sup> Further, either ZO-1 knock-down or expression of the free actin binding region, as a dominant negative inhibitor, prevented MLCK-dependent barrier regulation.<sup>53</sup> Thus, physiological MLCK-dependent barrier regulation occurs via a ZO-1-dependent process. The role of occludin in this form of tight junction barrier regulation has not been established.

Similar to physiological tight junction regulation, pathophysiological MLCK-dependent barrier loss is associated with increased undulation of *en face* ZO-1 profiles.<sup>33</sup> However, TNF- $\alpha$ -induced tight junction regulation is also accompanied by occludin internalization.<sup>33</sup> This caveolin-1-dependent endocytosis is prevented by MLCK inhibition.<sup>33,54</sup> Further, *in vivo* occludin overexpression reduced TNF- $\alpha$ -induced barrier dysfunction by  $\sim 50\%$ .<sup>54</sup> Similar data have demonstrated a critical role for occludin during *in vitro* TNF- $\alpha$ -induced barrier loss.<sup>55</sup> Thus, occludin endocytosis is a critical intermediate in pathophysiological tight junction regulation, both *in vitro* and *in vivo*. While not reported, it may be that this occludin endocytosis is responsible for the loss of size selectivity in pathophysiological, relative to physiological, MLCK-dependent barrier loss.



## The role of MLCK-dependent barrier regulation in disease initiation and progression

Identification of MLCK as a central regulator of intestinal epithelial tight junctions has enabled further characterization of its role in disease pathogenesis as well as the wider role of barrier loss in disease initiation and progression. Patient data supporting the critical role of barrier function include the increased risk of relapse from remission in Crohn's disease patients with increased intestinal permeability.<sup>56</sup> The observed permeability increases in a subset of healthy first degree relatives of Crohn's disease patients<sup>57,58</sup> also suggests a role for tight junction dysregulation in disease initiation, while, simultaneously, demonstrating that barrier dysfunction alone is insufficient to cause disease.

To determine the contribution of MLCK to initiation and development of disease, transgenic mice that express constitutively active MLCK within the intestinal epithelium were developed.<sup>59</sup> As expected, these mice displayed increased intestinal epithelial MLC phosphorylation and paracellular permeability. While mucosal immune activation, including increased TNF- $\alpha$ , IFN- $\gamma$ , IL-10, and IL-13, as well as increased numbers of lamina propria T cells were observed,<sup>47,59</sup> these mice did not develop spontaneous disease. Thus, the mice may be similar to healthy first-degree relatives of Crohn's disease patients. However, when immunodeficient mice expressing constitutively active MLCK were challenged with adoptive transfer of naive T cells, they developed colitis more rapidly than nontransgenic littermates.<sup>59</sup> In addition, disease in the transgenic mice was more severe in terms of cytokine production, histopathology, and overall survival.<sup>59</sup> Thus, while insufficient to initiate disease, epithelial tight junction dysregulation can accelerate disease progression and enhance disease severity. Conversely, delayed disease onset and reduced severity have been reported after adoptive transfer of naive T cells into long MLCK knockout mice.<sup>60</sup> Thus, targeted MLCK inhibition could be of therapeutic benefit.

### Potential of MLCK inhibition as a therapeutic approach

The prospect of preventing initial development of Crohn's disease, maintaining remission, and reduc-

ing severity of active flares by inhibition of epithelial long MLCK is compelling. The safety of such an approach is supported by the observation that long MLCK knockout mice are healthy<sup>61</sup> and are at least partially protected from many stressors.<sup>33,61-64</sup> However, established pharmacological inhibitors such as ML-7 and ML-9 are not useful, as they inhibit many kinases at concentrations necessary to block MLCK.<sup>65</sup> Although inhibitors with greater specificity are available,<sup>61,66,67</sup> these are also unsuitable, as they cannot distinguish between long and short MLCK, whose catalytic domains are derived from a single gene and are, therefore, identical.<sup>38</sup> Thus, a pharmacological approach targeting epithelial long MLCK enzymatic activity will also inhibit the short MLCK expressed in smooth muscle. Toxicities that would follow are demonstrated by the perinatal death of genetically modified mice lacking the MLCK catalytic domain,<sup>68</sup> and the hypotension, gut dysmotility, and viscus obstruction of mice with smooth muscle-specific MLCK deletion.<sup>69,70</sup> Thus, targeting of MLCK enzymatic activity may not be a viable approach to therapy when the risk of adverse effects is considered. One possible future direction may involve targeting of specific MLCK isoforms. Due to its expression within well-differentiated intestinal epithelia, specific inhibition of long MLCK1 might prevent tight junction dysfunction without systemic toxicities. The presence of a unique IgCAM domain that contains src phosphorylation sites could represent an alternative targets to inhibit MLCK1.<sup>71</sup> However, available data are limited and further investigation is needed.

### Conclusions

In summary, understanding the contribution of epithelial paracellular permeability to physiological processes in the intestine, and its dysregulation in disease, has provided invaluable insight into disease mechanisms. While not yet practical, isoform-specific MLCK inhibition may ultimately provide a viable approach to restoring tight junction barrier function and preventing or treating intestinal disease.

### Acknowledgments

We are grateful to past and present members of our research group, our collaborators, and many others in the field for the insights they have provided into tight junction structure and function. We

also apologize to colleagues whose outstanding work was not cited due to length restrictions. Our work is supported by the National Institutes of Health (R01DK61931, R01DK68271, P01DK067887), the Department of Defense (W81XWH-09-1-0341), the Broad Medical Research Foundation (IBD-022), the University of Chicago Cancer Center (P30CA14599), and the University of Chicago Institute for Translational Medicine (UL1RR024999).

## Conflicts of interest

The authors have no conflicts of interest.

## References

1. Marchiando, A.M., W.V. Graham & J.R. Turner. 2010. Epithelial barriers in homeostasis and disease. *Annu. Rev. Pathol.* **5**: 119–144.
2. Nusrat, A., J.R. Turner & J.L. Madara. 2000. Regulation of tight junctions by extracellular stimuli: nutrients, cytokines, and immune cells. *Am. J. Physiol.—Gastrointest. Liver Physiol.* **279**: G851–G857.
3. Farquhar, M. & G. Palade. 1963. Junctional complexes in various epithelia. *J. Cell Biol.* **17**: 375–412.
4. Martinez-Palomo, A. & D. Erlj. 1975. Structure of tight junctions in epithelia with different permeability. *Proc. Natl. Acad. Sci. USA* **72**: 4487–4491.
5. Bentzel, C.J., B. Hainau, A. Edelman, T. Anagnostopoulos & E.L. Benedetti. 1976. Effect of plant cytokinins on microfilaments and tight junction permeability. *Nature* **264**: 666–668.
6. Tsukita, S. & M. Furuse. 1999. Occludin and claudins in tight-junction strands: leading or supporting players? *Trends Cell Biol.* **9**: 268–273.
7. Nusrat, A., C.A. Parkos, P. Verkade, *et al.* 2000. Tight junctions are membrane microdomains. *J. Cell Sci.* **113**: 1771–1781.
8. Madara, J.L. 1987. Intestinal absorptive cell tight junctions are linked to cytoskeleton. *AJP—Cell Physiol.* **253**: C171–C175.
9. Fanning, A.S., B.J. Jameson, L.A. Jesaitis & J.M. Anderson. 1998. The tight junction protein zo-1 establishes a link between the transmembrane protein occludin and the actin cytoskeleton. *J. Biol. Chem.* **273**: 29745–29753.
10. Fanning, A.S., T.Y. Ma & J.M. Anderson. 2002. Isolation and functional characterization of the actin binding region in the tight junction protein zo-1. *FASEB J.* **16**: 1835–1837.
11. Bentzel, C.J., B. Hainau, S. Ho, *et al.* 1980. Cytoplasmic regulation of tight-junction permeability: effect of plant cytokinins. *Am. J. Physiol.* **239**: C75–C89.
12. Madara, J.L., D. Barenberg & S. Carlson. 1986. Effects of cytochalasin d on occluding junctions of intestinal absorptive cells: further evidence that the cytoskeleton may influence paracellular permeability and junctional charge selectivity. *J. Cell Biol.* **102**: 2125–2136.
13. Shen, L. & J.R. Turner. 2005. Actin depolymerization disrupts tight junctions via caveolae-mediated endocytosis. *Mol. Biol. Cell.* **16**: 3919–3936.
14. Madara, J.L. & S. Carlson. 1991. Supraphysiologic l-tryptophan elicits cytoskeletal and macromolecular permeability alterations in hamster small intestinal epithelium *in vitro*. *J. Clin. Invest.* **87**: 454–462.
15. Madara, J.L. & J.R. Pappenheimer. 1987. Structural basis for physiological regulation of paracellular pathways in intestinal epithelia. *J. Membr. Biol.* **100**: 149–164.
16. Pappenheimer, J.R. 1987. Physiological regulation of transepithelial impedance in the intestinal mucosa of rats and hamsters. *J. Membr. Biol.* **100**: 137–148.
17. Pappenheimer, J.R. & K.Z. Reiss. 1987. Contribution of solvent drag through intercellular junctions to absorption of nutrients by the small intestine of the rat. *J. Membr. Biol.* **100**: 123–136.
18. Atisook, K., S. Carlson & J.L. Madara. 1990. Effects of phlorizin and sodium on glucose-elicited alterations of cell junctions in intestinal epithelia. *Am. J. Physiol.* **258**: C77–C85.
19. Turner, J.R., D.E. Cohen, R.J. Mrsny & J.L. Madara. 2000. Noninvasive *in vivo* analysis of human small intestinal paracellular absorption: regulation by  $\text{Na}^+$ -glucose cotransport. *Dig. Dis. Sci.* **45**: 2122–2126.
20. Madara, J.L. 1994. Sodium-glucose cotransport and epithelial permeability. *Gastroenterology* **107**: 319–320.
21. Turner, J.R. & J.L. Madara. 1995. Physiological regulation of intestinal epithelial tight junctions as a consequence of  $\text{Na}^+$ -coupled nutrient transport. *Gastroenterology* **109**: 1391–1396.
22. Fine, K.D., C.A. Santa Ana, J.L. Porter & J.S. Fordtran. 1993. Effect of d-glucose on intestinal permeability and its passive absorption in human small intestine *in vivo*. *Gastroenterology* **105**: 1117–1125.
23. Fine, K.D., C.A. Santa Ana, J.L. Porter & J.S. Fordtran. 1994. Mechanism by which glucose stimulates the passive absorption of small solutes by the human jejunum *in vivo*. *Gastroenterology* **107**: 389–395.
24. Lane, J.S., E.E. Whang, D.A. Rigberg, *et al.* 1999. Paracellular glucose transport plays a minor role in the unanesthetized dog. *Am. J. Physiol.* **276**: G789–G794.
25. Fihn, B.M., A. Sjoqvist & M. Jodal. 2000. Permeability of the rat small intestinal epithelium along the villus- crypt axis: effects of glucose transport. *Gastroenterology* **119**: 1029–1036.
26. Meddings, J.B. & H. Westergaard. 1989. Intestinal glucose transport using perfused rat jejunum *in vivo*: model analysis and derivation of corrected kinetic constants. *Clin. Sci.* **76**: 403–413.
27. Atisook, K. & J.L. Madara. 1991. An oligopeptide permeates intestinal tight junctions at glucose-elicited dilatations. *Gastroenterology* **100**: 719–724.
28. Turner, J.R., B.K. Rill, S.L. Carlson, *et al.* 1997. Physiological regulation of epithelial tight junctions is associated with myosin light-chain phosphorylation. *Am. J. Physiol.* **273**: C1378–C1385.
29. Yuhan, R., A. Koutsouris, S.D. Savkovic & G. Hecht. 1997. Enteropathogenic escherichia coli-induced myosin light chain phosphorylation alters intestinal epithelial permeability. *Gastroenterology* **113**: 1873–1882.
30. Taylor, C.T., A.L. Dzus & S.P. Colgan. 1998. Autocrine regulation of epithelial permeability by hypoxia: role for polarized

- release of tumor necrosis factor alpha. *Gastroenterology* **114**: 657–668.
31. Zolotarevsky, Y., G. Hecht, A. Koutsouris, *et al.* 2002. A membrane-permeant peptide that inhibits mlc kinase restores barrier function in *in vitro* models of intestinal disease. *Gastroenterology* **123**: 163–172.
  32. Wang, F., W.V. Graham, Y. Wang, *et al.* 2005. Interferon-gamma and tumor necrosis factor-alpha synergize to induce intestinal epithelial barrier dysfunction by up-regulating myosin light chain kinase expression. *Am. J. Pathol.* **166**: 409–419.
  33. Clayburgh, D.R., T.A. Barrett, Y. Tang, *et al.* 2005. Epithelial myosin light chain kinase-dependent barrier dysfunction mediates T cell activation-induced diarrhea *in vivo*. *J. Clin. Invest.* **115**: 2702–2715.
  34. Ferran, C., M. Dy, K. Sheehan, *et al.* 1991. Inter-mouse strain differences in the *in vivo* anti-cd3 induced cytokine release. *Clin. Exp. Immunol.* **86**: 537–543.
  35. Musch, M.W., L.L. Clarke, D. Mamah, *et al.* 2002. T cell activation causes diarrhea by increasing intestinal permeability and inhibiting epithelial na<sup>+</sup>/k<sup>+</sup>-atpase. *J. Clin. Invest.* **110**: 1739–1747.
  36. Clayburgh, D.R., S. Rosen, E.D. Witkowski, *et al.* 2004. A differentiation-dependent splice variant of myosin light chain kinase, mlck1, regulates epithelial tight junction permeability. *J. Biol. Chem.* **279**: 55506–55513.
  37. Graham, W.V., F. Wang, D.R. Clayburgh, *et al.* 2006. Tumor necrosis factor-induced long myosin light chain kinase transcription is regulated by differentiation-dependent signaling events. Characterization of the human long myosin light chain kinase promoter. *J. Biol. Chem.* **281**: 26205–26215.
  38. Kamm, K.E. & J.T. Stull. 2001. Dedicated myosin light chain kinases with diverse cellular functions. *J. Biol. Chem.* **276**: 4527–4530.
  39. Blair, S.A., S.V. Kane, D.R. Clayburgh & J.R. Turner. 2006. Epithelial myosin light chain kinase expression and activity are upregulated in inflammatory bowel disease. *Lab. Invest.* **86**: 191–201.
  40. Ma, T.Y., M.A. Boivin, D. Ye, *et al.* 2005. Mechanism of tnf-alpha modulation of caco-2 intestinal epithelial tight junction barrier: role of myosin light-chain kinase protein expression. *Am. J. Physiol.-Gastrointest. Liver Physiol.* **288**: G422–G430.
  41. Ma, T.Y., G.K. Iwamoto, N.T. Hoa, *et al.* 2004. Tnf-alpha-induced increase in intestinal epithelial tight junction permeability requires nf-kappa b activation. *Am. J. Physiol.-Gastrointest. Liver Physiol.* **286**: G367–G376.
  42. Peterson, M.D. & M.S. Mooseker. 1992. Characterization of the enterocyte-like brush border cytoskeleton of the c2bbe clones of the human intestinal cell line, caco-2. *J. Cell Sci.* **102**(Pt 3): 581–600.
  43. Tang, Y., D.R. Clayburgh, N. Mittal, *et al.* 2010. Epithelial nf-kappab enhances transmucosal fluid movement by altering tight junction protein composition after T cell activation. *Am. J. Pathol.* **176**: 158–167.
  44. Bruewer, M., A. Luegering, T. Kucharzik, *et al.* 2003. Proinflammatory cytokines disrupt epithelial barrier function by apoptosis-independent mechanisms. *J. Immunol.* **171**: 6164–6172.
  45. Clayburgh, D.R., M.W. Musch, M. Leitges, *et al.* 2006. Coordinated epithelial nhe3 inhibition and barrier dysfunction are required for tnf-mediated diarrhea *in vivo*. *J. Clin. Invest.* **116**: 2682–2694.
  46. Shen, L., E.D. Black, E.D. Witkowski, *et al.* 2006. Myosin light chain phosphorylation regulates barrier function by remodeling tight junction structure. *J. Cell Sci.* **119**: 2095–2106.
  47. Weber, C.R., D.R. Raleigh, L. Su, *et al.* 2010. Epithelial myosin light chain kinase activation induces mucosal interleukin-13 expression to alter tight junction ion selectivity. *J. Biol. Chem.* **285**: 12037–12046.
  48. Furuse, M., K. Fujita, T. Hiragi, *et al.* 1998. Claudin-1 and -2: novel integral membrane proteins localizing at tight junctions with no sequence similarity to occludin. *J. Cell Biol.* **141**: 1539–1550.
  49. Simon, D.B., Y. Lu, K.A. Choate, *et al.* 1999. Paracellin-1, a renal tight junction protein required for paracellular mg2+ resorption. *Science* **285**: 103–106.
  50. Van Itallie, C., C. Rahner & J.M. Anderson. 2001. Regulated expression of claudin-4 decreases paracellular conductance through a selective decrease in sodium permeability. *J. Clin. Invest.* **107**: 1319–1327.
  51. Amasheh, S., N. Meiri, A.H. Gitter, *et al.* 2002. Claudin-2 expression induces cation-selective channels in tight junctions of epithelial cells. *J. Cell Sci.* **115**: 4969–4976.
  52. Shen, L., C.R. Weber & J.R. Turner. 2008. The tight junction protein complex undergoes rapid and continuous molecular remodeling at steady state. *J. Cell Biol.* **181**: 683–695.
  53. Yu, D., A.M. Marchiando, C.R. Weber, *et al.* 2010. Mlck-dependent exchange and actin binding region-dependent anchoring of zo-1 regulate tight junction barrier function. *Proc. Natl. Acad. Sci. USA* **107**: 8237–8241.
  54. Marchiando, A.M., L. Shen, W.V. Graham, *et al.* 2010. Caveolin-1-dependent occludin endocytosis is required for tnf-induced tight junction regulation *in vivo*. *J. Cell Biol.* **189**: 111–126.
  55. Van Itallie, C.M., A.S. Fanning, J. Holmes & J.M. Anderson. 2010. Occludin is required for cytokine-induced regulation of tight junction barriers. *J. Cell Sci.* 2844–2852.
  56. Wyatt, J., H. Vogelsang, W. Hubl, T. Waldhoer & H. Lochs. 1993. Intestinal permeability and the prediction of relapse in crohn's disease. *Lancet* **341**: 1437–1439.
  57. Hollander, D., C.M. Vadheim, E. Brettholz, *et al.* 1986. Increased intestinal permeability in patients with Crohn's disease and their relatives. A possible etiologic factor. *Ann. Intern. Med.* **105**: 883–885.
  58. Buhner, S., C. Buning, J. Genschel, *et al.* 2006. Genetic basis for increased intestinal permeability in families with crohn's disease: role of card15 3020insc mutation? *Gut* **55**: 342–347.
  59. Su, L., L. Shen, D.R. Clayburgh, *et al.* 2009. Targeted epithelial tight junction dysfunction causes immune activation and contributes to development of experimental colitis. *Gastroenterology* **136**: 551–563.
  60. Su, L., S.C. Nalle, E.A. Sullivan, *et al.* 2009. Genetic ablation of myosin light chain kinase limits epithelial barrier dysfunction and attenuates experimental inflammatory bowel disease. *Gastroenterology* **136**: A81 (Abstract).



61. Wainwright, M.S., J. Rossi, J. Schavocky, *et al.* 2003. Protein kinase involved in lung injury susceptibility: evidence from enzyme isoform genetic knockout and *in vivo* inhibitor treatment. *Proc. Natl. Acad. Sci. USA* **100**: 6233–6238.
62. Reynoso, R., R.M. Perrin, J.W. Breslin, *et al.* 2007. A role for long chain myosin light chain kinase (mlck-210) in microvascular hyperpermeability during severe burns. *Shock* **28**: 589–595.
63. Rossi, J.L., A.V. Velentza, D.M. Steinhorn, *et al.* 2007. Mlck210 gene knockout or kinase inhibition preserves lung function following endotoxin-induced lung injury in mice. *Am. J. Physiol.–Lung Cell Mol. Physiol.* **292**: L1327–L1334.
64. Xu, J., X.P. Gao, R. Ramchandran, *et al.* 2008. Nonmuscle myosin light-chain kinase mediates neutrophil transmigration in sepsis-induced lung inflammation by activating beta2 integrins. *Nat. Immunol.* **9**: 880–886.
65. Bain, J., H. McLauchlan, M. Elliott & P. Cohen. 2003. The specificities of protein kinase inhibitors: an update. *Biochem. J.* **371**: 199–204.
66. Behanna, H.A., D.M. Watterson & H.R. Ranaivo. 2006. Development of a novel bioavailable inhibitor of the calmodulin-regulated protein kinase mlck: a lead compound that attenuates vascular leak. *Biochim. Biophys. Acta.* **1763**: 1266–1274.
67. Owens, S.E., W.V. Graham, D. Siccardi, J.R. Turner & R.J. Mrsny. 2005. A strategy to identify stable membrane-permeant peptide inhibitors of myosin light chain kinase. *Pharm. Res.* **22**: 703–709.
68. Somlyo, A.V., H. Wang, N. Choudhury, *et al.* 2004. Myosin light chain kinase knockout. *J. Muscle Res. Cell Motil.* **25**: 241–242.
69. He, W.Q., Y.N. Qiao, C.H. Zhang, *et al.* 2011. Role of myosin light chain kinase in regulation of basal blood pressure and maintenance of salt-induced hypertension. *Am. J. Physiol.–Heart Circ. Physiol.* **301**: H584–H591.
70. He, W.Q., Y.J. Peng, W.C. Zhang, *et al.* 2008. Myosin light chain kinase is central to smooth muscle contraction and required for gastrointestinal motility in mice. *Gastroenterology* **135**: 610–620.
71. Birukov, K.G., C. Csontos, L. Marzilli, *et al.* 2000. Differential regulation of alternatively spliced endothelial cell myosin light chain kinase isoforms by p60src. *J. Biol. Chem.* **276**: 8567–8573.
72. Shen, L., C.R. Weber, D.R. Raleigh, *et al.* 2011. Tight junction pore and leak pathways: a dynamic duo. *Annu. Rev. Physiol.* **73**: 283–309.