

Histologic Healing Is More Strongly Associated with Clinical Outcomes in Ileal Crohn's Disease than Endoscopic Healing

Q6 Britt Christensen,^{*,‡,§} Jonathan Erlich,^{*} Peter R. Gibson,[§] Jerrold R. Turner,^{*,||} John Hart,^{*,||} and David T. Rubin^{*}

^{*}Inflammatory Bowel Disease Center, University of Chicago Medicine, Chicago, Illinois; [‡]Department of Gastroenterology, Royal Melbourne Hospital, Melbourne, Australia; [§]Department of Gastroenterology, Alfred Hospital and Monash University, Melbourne, Australia; and ^{||}Department of Pathology, University of Chicago Medicine, Chicago, Illinois

BACKGROUND & AIMS: Deep remission, based on clinical remission and evidence of healing during endoscopic evaluation, are goals of medical treatments for Crohn's disease (CD). We investigated whether histologic healing is associated with outcomes of patients with CD ileitis.

METHODS: We performed a retrospective study of 101 patients with CD (52% male) isolated to the terminal ileum who had a colonoscopy between September 2005 and June 2015. Our analysis included patients in clinical remission at colonoscopy who had biopsies collected from colon and ileum. The ileum was evaluated for endoscopic healing (no ulceration) and histologic evidence of healing (no active inflammation, erosions, ulceration, or neutrophil infiltration). We compared times of clinical relapse-free survival, medication escalation, corticosteroid use, or hospitalization secondary to disease activity between patients with and without histological and endoscopic healing, followed for a median 21 months. We identified factors associated with survival using Kaplan Meier analysis and Cox proportional hazard model.

RESULTS: At ileo-colonoscopy, 63% of patients had endoscopic healing and 55% had histologic evidence of healing. The level of agreement between endoscopic and histologic activity was fair (62%, $K = 0.2250$, $P = .0064$). Forty-two patients had clinical relapse, 45 had medication escalation, 30 required corticosteroids, and 17 were hospitalized (3 required surgery). On multivariate analysis, only histologic healing was associated with decreased risk of clinical relapse (hazard ratio [HR], 2.05; 95% CI, 1.07–3.94; $P = .031$), medication escalation (HR, 2.17; 95% CI, 1.2–3.96; $P = .011$), and corticosteroid use (HR, 2.44; 95% CI, 1.17–5.09; $P = .018$). No factors were associated with hospitalization.

CONCLUSIONS: In patients with ileal CD in clinical remission, histologic healing but not endoscopic healing is associated with decreased risk of clinical relapse, medication escalation, or corticosteroid use.

Keywords: Inflammatory Bowel Disease; Mucosal Healing; Histology; Histopathology; Prognostic Factor.

In patients with Crohn's disease (CD), persistent inflammation leads to bowel damage. Cumulative bowel damage, described as progressing from inflammatory to stricturing and then to a penetrating phenotype, may predict long-term disability and can lead to clinical symptoms and need for surgery.¹

Historically, treatment of CD aimed to control clinical symptoms. However, clinical symptoms poorly correlate with endoscopic mucosal disease activity, and resolution of symptoms alone fails to alter this natural progression of CD and cumulative bowel damage.² On the other hand, mucosal healing is associated with better long-term outcomes; patients who achieve mucosal healing have lower rates of hospitalization and surgery and are less likely to have a clinical flare on follow-up.^{3–6} Therefore, deep remission, defined as clinical remission and

endoscopic healing without bowel ulceration, has emerged as the recommended goal of treatment therapy.^{7,8}

Histologic inflammation may persist in the setting of mucosal healing. In UC, histologic inflammation is a stronger predictor of clinical flares, corticosteroids use, and hospitalization for disease activity than mucosal healing.^{9,10} In addition, histologic normalization has been

Abbreviations used in this paper: CD, Crohn's disease; EH, endoscopic healing; HBI, Harvey-Bradshaw Index; HR, hazard ratio; IGHAS, ileal Global Histological Disease Activity Score; IQR, interquartile range; UC, ulcerative colitis.

© 2020 by the AGA Institute
1542-3565/\$36.00
<https://doi.org/10.1016/j.cgh.2019.11.056>

associated with improved long-term clinical outcomes when compared with histologic quiescence.¹¹ This has led to suggestions that histologic assessment in UC should be used as an adjunct to mucosal disease assessment in standard care.^{11,12}

The role of histologic assessment in CD has been poorly explored. Despite the recent appreciation for the value of endoscopic assessment in CD, there is little evidence as to whether microscopic examination of the mucosa adds any further prognostic information. Histologic healing is achievable in CD,^{13,14} but because of the patchy nature of the disease, it is often believed that histologic assessment is subject to too much biopsy bias and is too difficult to study.¹⁵ In addition, there is currently no consensus on the use of a specific scoring system when assessing histologic changes in CD.

The aims of this study were to explore whether histologic healing (Supplementary Table 1) provides any further prognostic information in regard to clinical outcomes, hospitalization, and medication escalation in patients with ileal CD when compared with endoscopic healing (EH) alone.

Methods

An exploratory retrospective case-control study of patients with CD limited to the terminal ileum was performed and was approved by the Institutional Review Board (IRB13-1063). All patients who underwent colonoscopy for CD at the University of Chicago between September 2005 and June 2015 were identified. For patients with a confirmed diagnosis of CD based on clinical and histologic information, the electronic medical record was then reviewed. Inclusion criteria comprised a colonoscopy to the terminal ileum, biopsies of both the colon and terminal ileum with disease limited to the terminal ileum both macroscopically and microscopically throughout the duration of their disease, clinical remission at the time of the colonoscopy, and ≥ 6 months of clinical follow-up after colonoscopy. Patients with inadequate documentation, inflammation present in the colon, undergone a colectomy, or confirmed *Clostridioides difficile* infection at the time of follow-up colonoscopy were excluded.

Medical Records Abstraction

Endoscopy reports were retrieved through an electronic documentation system (Provation, Minneapolis, MN). Demographic, clinical, histologic, and biochemical data were collected from the electronic medical record system (EPIC, Verona, WI), including date of disease onset, disease duration, smoking history, CD phenotype according to Montreal classification (B1, inflammatory; B2, stricturing; B3, penetrative), disease location (ileal disease only included), and previous and current use of anti-inflammatory agents and/or immunosuppressant

What You Need to Know

Background

Deep remission, based on clinical remission and evidence of healing on endoscopic evaluation are goals of medical treatments for Crohn's disease (CD).

Findings

In patients with ileal CD in clinical remission, histologic healing, but not endoscopic healing, indicates that patients have decreased risk of clinical relapse, medication escalation, or corticosteroid use.

Implications for patient care

Patients in remission from CD should be evaluated for histologic evidence of healing.

therapy (steroids, immunomodulators, anti-tumor necrosis factor agents) at the time of colonoscopy.

Endoscopic Assessment

An academic IBD expert gastroenterologist with minimum of 5 years of experience performed all endoscopies, during which endoscopic photographs were obtained from each bowel segment, with targeted photos of the areas of endoscopic activity. As per the inclusion criteria, patients could not have evidence of past or present colonic CD. Consistent with recent large clinical trials and the STRIDE guidelines, EH was defined as the presence of no mucosal ulceration including aphthae,^{12,16,17} which was confirmed by both the endoscopic report and photographic evidence.

Histologic Assessment

Within the unit, mucosal biopsies from both the ileum and colon are routinely taken targeting the area of most significant mucosal inflammation. Patients were excluded if there was histologic evidence of CD in the colon.

The histopathology reports from all diagnostic, screening, and surveillance endoscopic biopsies contained in the patient's electronic medical records were reviewed. Two pathologists (J.R.T., J.H.) who specialize in gastrointestinal histology and whose agreement has been previously described¹⁸ routinely assessed all biopsies and reported the worst affected area. There are several histologic scoring schemes that have been used in CD; however, none of these have been validated.¹⁹⁻²¹

In the absence of a validated histologic grading score in CD, histologic healing was assessed by using a modified Ileal Global Histological Disease Activity Score (IGHAS).¹⁴ The IGHAS is the most commonly used histologic index in CD and assesses and scores 2 features of chronicity (architectural changes and infiltration of

mononuclear cells in the lamina propria) and 5 features of activity (epithelial damage, polymorphonuclear cells in the lamina propria, polymorphonuclear cells in the epithelium, presence of erosions and/or ulcers, epithelial granuloma). For the purposes of the current study, histologic assessment was dichotomized to histologic healing, where none of the features of activity above were present, and histologic activity, where 1 or more of the features were present. Severity of inflammation was not scored, as stated in [Supplementary Table 1](#).

Assessment of Clinical Outcomes

At every patient clinic visit at the University of Chicago, the Harvey-Bradshaw Index (HBI) is calculated.²² All patients who were in clinical remission at the time of the colonoscopy, defined as HBI ≤ 4 , and who had ≥ 6 months of follow-up were included. Clinical relapse-free survival, medication escalation-free survival, corticosteroid-free survival, and hospitalization-free survival were calculated and defined as time from colonoscopy to event. Clinical relapse was defined at clinical follow-up as HBI > 4 that resulted in alteration or addition of medical therapy, hospitalization, or surgery. Escalation of medication was defined as need for a course of corticosteroid or change in medication maintenance including change of biologic agent or escalation of dose, addition or change of immunomodulator in combination therapy for CD, or escalation from immunomodulator to biologic agent. Corticosteroid use was defined as the requirement for an increase in dosage or new course of oral corticosteroids including budesonide for active CD symptoms. Hospitalization was recorded if required for disease activity or refractory disease including need for surgery.

Statistical Analysis

Continuous variables were summarized by using medians and interquartile ranges (IQRs). Categorical variables were expressed as the percentage and number of cohort. Cohen's kappa coefficient (κ) was calculated to measure agreement between endoscopic and histologic activity.

Kaplan-Meier analyses were performed to compare clinical relapse-free survival, medication escalation-free survival, corticosteroid-free survival, and hospitalization-free survival in those with and without EH and with and without histologic healing. Univariate and multivariate Cox proportional hazard regression analysis was performed to identify predictors of clinical relapse, medication escalation, corticosteroid use, and hospitalization. All variables with P values $\leq .10$ on univariate analysis were retained and integrated into the multivariable models. A two-sided P value of .05 or less was considered statistically significant. All data analyses were performed by using Stata 12.0 (StataCorp, College Station, TX).

Results

Patients

Of 1287 patients with documented CD and a colonoscopy, 150 fulfilled entry criteria with disease limited to the terminal ileum, normal colonoscopic biopsies, and evaluable biopsies from the ileum. Of these, 101 were in clinical remission at the time of colonoscopy and were included in the study ([Figure 1](#)).

The patients' demographics and clinical characteristics are shown in [Table 1](#). Fifty-two percent of patients were male, with median age of diagnosis of 25 years and median duration of disease at time of colonoscopy of 12 years. Eighty-six percent of patients had 2 or more sets of biopsies taken of the terminal ileum. At colonoscopy, 64 patients (63%) had EH, and 55% had achieved histologic healing. The level of agreement between endoscopic activity and histologic activity was fair at 62% ($\kappa = 0.2250$; $P = .011$).

Clinical Relapse-Free Survival

Median follow-up time was 21 months (IQR, 12–40). Clinical relapse occurred in 42% of patients ($n = 42$) after median time of 16 months (IQR, 7–26). As shown in [Figure 2](#), patients with EH and histologic healing were less likely to experience clinical relapse ([Figure 2A](#) and [B](#)). By univariate analysis, no other factors were associated with improved clinical relapse-free survival ([Table 2](#)). By multivariable analysis, only histologic activity remained associated with clinical relapse-free survival with hazard ratio (HR) 2.05 (1.07–3.94; $P = .031$; [Table 2](#)). EH did not independently predict a lower rate of clinical relapse.

Medication Escalation-Free Survival

The medication regimen was escalated in 45% of patients ($n = 45$), two of whom were in clinical remission but had moderate or severe endoscopic disease activity on colonoscopy. Thirty-two patients required a course of oral corticosteroids (budesonide or prednisolone), 19 required a new biologic agent, 1 had escalation of biologic agent dosing, and 6 patients had an immunomodulator added to their biologic therapy. Patients with histologic healing were less likely to have medication escalation ([Figure 2C](#)). EH was not significantly associated with a lower rate of medication escalation ([Figure 2D](#)). The only factor associated with improved medication escalation-free survival was the achievement of histologic healing compared with histologic activity, with HR 2.17 (1.20–3.96; $P = .011$) on univariate analysis and HR 2.08 (1.14–3.80; $P = .017$) on multivariable analysis ([Table 2](#)).

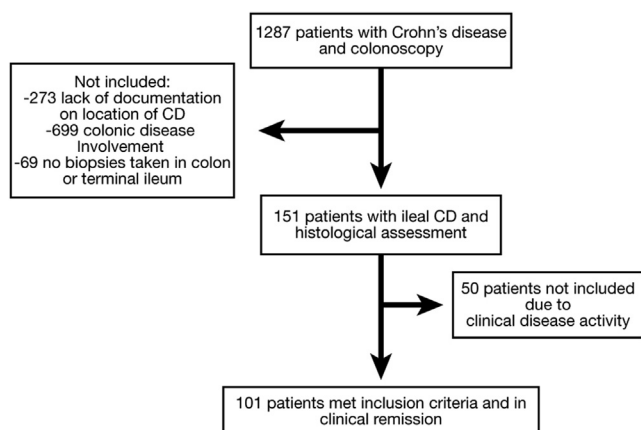
349
350
351
352
353
354
355
356
357
358
359
360
361
362
363
364
365
366
367
368
369
370
371
372
373
374
375
376
377
378
379
380
381
382
383
384
385
386
387
388
389
390
391
392
393
394
395
396
397
398
399
400
401
402
403
404
405
406

Figure 1. Flowchart of patients included in the study. CD, Crohn's disease.

Corticosteroid-Free Survival

Patients with histologic healing, but not EH, were less likely to have a requirement for salvage therapy with corticosteroids (Figure 3A and B). By univariate and multivariable analyses, the only factor associated with corticosteroid-free survival was the achievement of histologic healing compared with histologic activity (HR 2.44 [1.17–5.09]; $P = .018$; Table 2).

Hospitalization-Free Survival

Seventeen percent of patients ($n = 17$) were hospitalized, and 3 patients proceeded to ileocectomy. Because of small numbers, predictors of surgery could not be analyzed. No factor was associated with hospitalization-free survival. EH and histologic healing did not protect from hospitalization on follow-up (Figure 3C and D).

Table 1. Clinical Characteristics at Baseline

Baseline characteristics (N = 101)	Patients with histologic healing	Patients without histologic healing
	N = 56	N = 45
	Median (IQR) or percentage (n)	
Age at diagnosis of CD (y)	24 (16–31)	27 (19–34)
Gender (male)	48% (n = 27)	58% (n = 26)
Duration of disease (y)	14 (9–25)	9 (3–19)
Disease phenotype		
B1 (inflammatory)	14% (n = 8)	38% (n = 17)
B2 (stricturing)	61% (n = 34)	40% (n = 18)
B3 (penetrating)	25% (n = 14)	22% (n = 10)
Medications at time of colonoscopy		
Oral prednisolone/budesonide	20% (n = 11)	18% (n = 8)
5-Aminosalicylic acid	9% (n = 5)	11% (n = 5)
6-Mercaptopurine/azathioprine	45% (n = 25)	38% (n = 17)
Methotrexate	11% (n = 6)	9% (n = 4)
Anti-tumor necrosis factor	32% (n = 18)	31% (n = 14)
Ustekinumab	2% (n = 1)	0% (n = 0)
Vedolizumab	7% (n = 4)	4% (n = 2)
Endoscopic healing	73% (n = 41)	51% (n = 23)

CD, Crohn's disease; IQR, interquartile range.

Discussion

Recently, there has been increased emphasis placed on objective markers of disease activity. In CD particularly, the association with clinical symptoms and bowel damage is poor.³ This may, in part, explain why despite the advent of many new therapies, the natural history of the disease has barely changed up until recently.²³ Recently, expert consensus has stated that the target of treatment for CD should be EH, as defined by lack of ulceration, to attempt to prevent ongoing bowel damage.¹² Unlike UC, where histologic healing has been defined as an adjunct to EH²⁴ and the combination of both has been proposed as a new endpoint of interest,²⁵ the role of histology in CD beyond diagnosis is poorly defined. In the current exploratory study, the prognostic value of histology in patients with CD restricted to the ileum has clearly shown that histologic remission is associated with superior clinical relapse-free survival and reduced need for medication escalation and corticosteroids. Moreover, the results indicate the poor performance of EH alone as a prognostic predictor.

As in UC, this study demonstrates that there is a disparity between EH and histologic remission. We found that the level of agreement between endoscopic activity and histologic activity was only fair at 63% ($\kappa = 0.2250$). Microscopic inflammation persisted in 36% of those who achieved EH. This is similar to previous reports of persistent microscopic inflammation in the setting of EH between 25% and 37%^{8,26} and emphasizes the need to consider histologic outcomes separate to endoscopic measures of remission in CD.

Several studies have demonstrated the effect of medical therapy on histologic healing in patients with CD; azathioprine, methotrexate, and the biologics can all

407
408
409
410
411
412
413
414
415
416
417
418
419
420
421
422
423
424
425
426
427
428
429
430
431
432
433
434
435
436
437
438
439
440
441
442
443
444
445
446
447
448
449
450
451
452
453
454
455
456
457
458
459
460
461
462
463
464

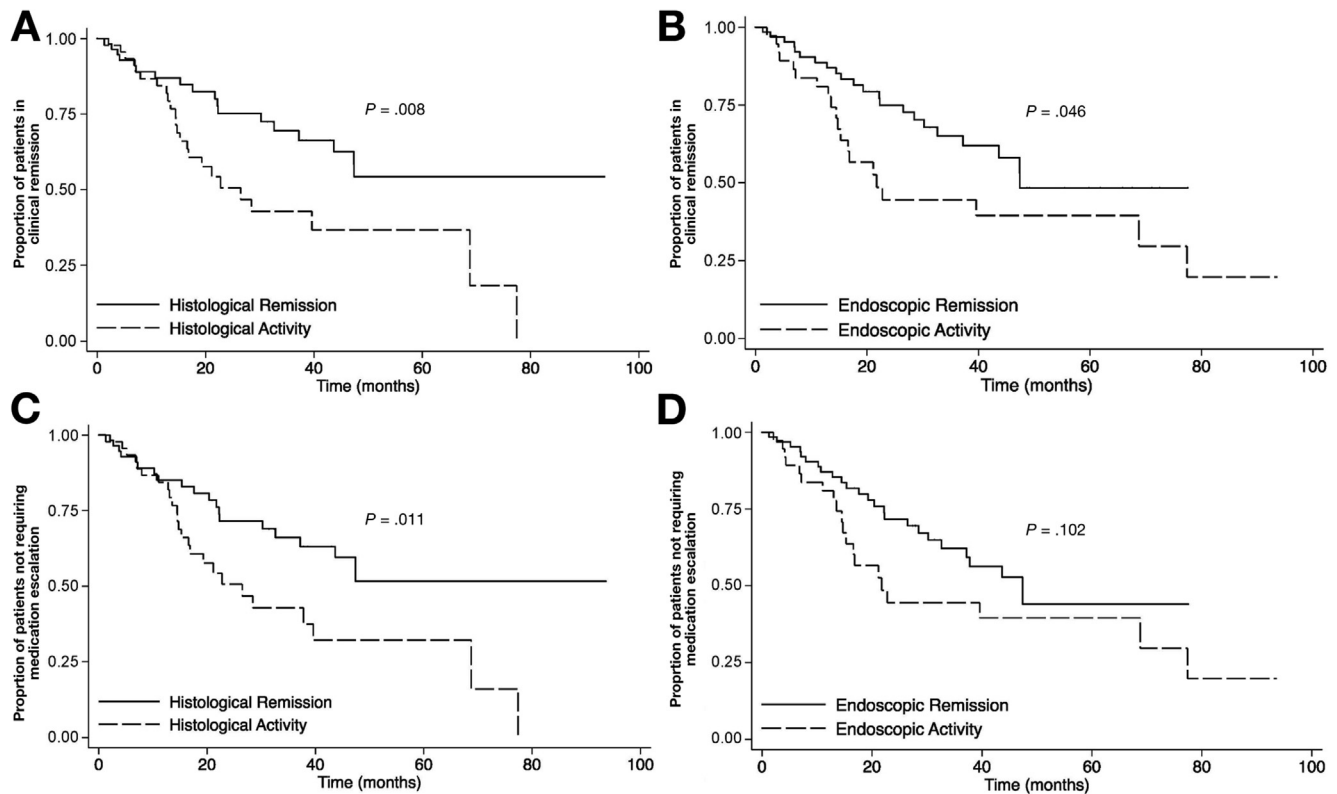


Figure 2. Kaplan-Meier analysis of effect of endoscopic and histologic activity on (A) clinical relapse-free survival versus histologic healing, (B) clinical relapse-free survival versus endoscopic healing, (C) medication escalation-free survival versus histologic healing, and (D) medication escalation-free survival versus endoscopic healing.

result in histologic healing.^{13,14,16,17,27} A subanalysis of 13 patients from the ACCENT 1 study established that histologic improvement after 54 weeks of infliximab was associated with a consistent decrease in the expression of inflammatory markers including CD68 and gelatinase B in the colonic mucosa.²⁸ The relationship of histology to chance of relapse was explored in a study of 46 patients with Crohn's colitis undergoing surveillance colonoscopy, and histology and/or active mucosal disease did not predict chance of relapse.²⁰ This study also found similar lack of association in patients with UC. However, a recent article on 62 CD patients in clinical remission demonstrated that histologic inflammation was strongly associated with an increased risk of clinical flares within 1–2 years and that endoscopic activity alone did not predict clinical flares on follow-up.¹⁹ Two recent studies have also specifically examined the link between histologic remission and outcomes in UC and found that histologic disease activity was linked to an increased chance of clinical relapse. Bryant et al¹⁰ demonstrated that histologic remission predicted reduced corticosteroid use and episodes of acute severe colitis requiring hospitalization in a cohort of 91 patients with UC during a period of 6 years. In a large cohort of 310 patients from Chicago, histologic normalization was also found to be achievable, and this predicted a lower chance of clinical relapse during the ensuing 16 months.¹¹ Because of such studies, routine histologic assessment is now recommended in

UC.¹² This exploratory study on ileal CD demonstrates that histologic assessment in CD patients is also clinically relevant, despite the patchy nature of the disease. Therefore, we recommend that routine ileal biopsies be obtained when patients with terminal ileal disease are being assessed.

As we strive to achieve deeper markers of disease control, histologic healing may emerge as a treatment target in CD. However, this aspiration raises several issues. Dichotomously scoring the histopathology of individual biopsies as healed versus inflamed by using the criteria applied in the current study should be relatively easy, as opposed to scoring the severity of inflammation. It is the patchy nature of inflammation in CD with the implications around what should be defined as healed that provides the uncertainty and controversy. Studies of where the biopsies should be taken and how many are needed to confidently make such a decision are required so a validated and reproducible histologic index can be established. Despite this, the results of the current study have clearly demonstrated that the goal of gaining meaningful prognostic information from assessing histologic healing in the terminal ileum is achievable.

Even if these guidelines existed, it is as yet unclear whether it is even possible to achieve histologic healing in the majority of patients or whether treating our patients more aggressively with medical therapy will improve rates of histologic healing. Hence, although

Table 2. Univariable Predictors of Clinical Outcome Measures in Patients With Crohn's Disease

Variable	Clinical relapse, n = 42 ^a HR (95% CI), P value	Medication escalation, n = 45 ^a HR (95% CI), P value	Corticosteroid requirement, n = 32 ^a HR (95% CI), P value	Hospitalization for severe disease, n = 17 ^a HR (95% CI), P value
Age at diagnosis of CD (y)	0.98 (0.95–1.01), .196	0.98 (0.95–1.00), .127	0.98 (0.95–1.01), .204	0.98 (0.94–1.03), .463
Sex (male)	0.66 (0.36–1.23), .197	0.60 (0.32–1.09), .095	0.65 (0.32–1.32), .239	0.49 (0.18–1.36), .171
Disease duration (y from diagnosis to colonoscopy)	0.99 (0.97–1.02), .569	0.99 (0.97–1.01), .656	0.99 (0.96–1.02), .637	1.00 (0.96–1.04), .980
Penetrative vs inflammatory (B2 v sB1)	0.78 (0.39–1.58), .493	0.89 (0.44–1.76), .729	1.08 (0.45–2.59), .860	1.95 (0.43–8.90), .391
Strictureing vs inflammatory (B3 vs B1)	0.44 (0.16–1.20), .111	0.45 (0.17–1.22), .120	0.62 (0.19–1.99), .422	1.06 (0.17–6.56), .947
Maintenance therapy				
- 5-ASA	1.21 (0.48–3.11), .682	1.13 (0.44–2.88), .794	0.90 (0.27–2.97), .861	1.8 (0.24–4.76), .923
- Immunomodulator	0.66 (0.35–1.25), .202	0.73 (0.39–1.36), .327	0.62 (0.30–1.27), .193	0.41 (0.13–1.25), .117
On oral corticosteroids at endoscopy	1.50 (0.73–3.05), .267	1.20 (0.47–3.05), .703	1.34 (0.47–3.88), .578	1.29 (0.29–5.72), .737
Ongoing histologic activity	2.31 (1.24–4.31), .008 ^b	2.17 (1.20–3.96), .011 ^b	2.36 (1.16–4.81), .018 ^b	1.27 (0.47–3.43), .636
Ongoing endoscopic activity	1.87 (1.01–3.45), .046 ^b	1.64 (0.91–2.99), .102	1.39 (0.68–2.85), .369	0.97 (0.35–2.67), .951

5ASA, 5-Aminosalicylic acid.

^aCox regression univariate analyses presented.^bP value ≤.05 considered significant.

histologic healing might provide prognostic information, at this stage it cannot be recommended as a target on which therapeutic decisions in patients with ileal disease can be made. Although those who have a healed ileum have a better clinical outlook, whether this group who achieve this level of deeper remission need less stringent follow-up or monitoring or are less likely to have disease that progresses to a stricturing or penetrating phenotype requires further study.

CD causes chronic transmural inflammation of the gastrointestinal tract. There is evidence that patients who achieve transmural healing also have more favorable clinical outcomes on follow-up compared with patients who achieve EH alone.²⁹ It is unclear whether transmural inflammation persists in the setting of histologic healing as demonstrated on mucosal biopsies or whether achieving the potentially even deeper target of transmural healing could result in further improvement in clinical outcome compared with histologic healing alone, but this should be looked at in future research.

There are several limitations to this study. First, this is a retrospective analysis with a relatively small sample size, and there may be inaccuracies in data collection that affect results. The extensive experience of the involved clinicians and the overlapping data sources (electronic records, endoscopy records, and pathology reports) aim to minimize this limitation, but those patients in prolonged clinical remission may not be included because of not having had a colonoscopy or endoscopic biopsies. Second, the generalizability of the data is also uncertain; this is a single-center study based in a tertiary hospital setting where experts in the area of inflammatory bowel disease manage patients. Third, the findings are currently

applicable only to patients with ileal CD. The patchiness of the disease makes histologic studies in patients with colonic or ileocolonic disease challenging. In the same way, however, the restriction to terminal ileal disease was a strength of the current study because it aimed to examine a concept with clearly positive results. It provides the impetus to expand the work to more extensive disease to determine whether normalization of histology has prognostic value as it does in ileal disease and UC. Fourth, even though the current histologic scale was not assessing severity of inflammation but rather the normality of biopsies, its application and reproducibility have not undergone independent validation. Because there are currently no validated histologic indices in CD, we focused on the absence of an active inflammatory infiltrate to represent the absence of histologic activity. The presence of acute inflammation, which is of clinical significance, is simple and reproducible and is the outcome that has been reported to improve after biologic treatment in previous CD trials.^{14,16,17} Fifth, the use of clinical remission as an inclusion criterion for this study also has its own limitations. Patients with both histologic healing and EH may have clinical symptoms, so not all patients with EH would be included in this study. In addition, it is unclear what percentage of patients had an inflammatory relapse because the outcomes analyzed were clinical relapse and need for steroids or medication escalation, which may have occurred in some patients who had worsening symptoms despite no increase in inflammatory burden. Finally, it is noted that biomarker assessment at time of colonoscopy would strengthen this study and that future prospective studies should include calprotectin, C-reactive protein assessment, and perhaps intestinal ultrasound to

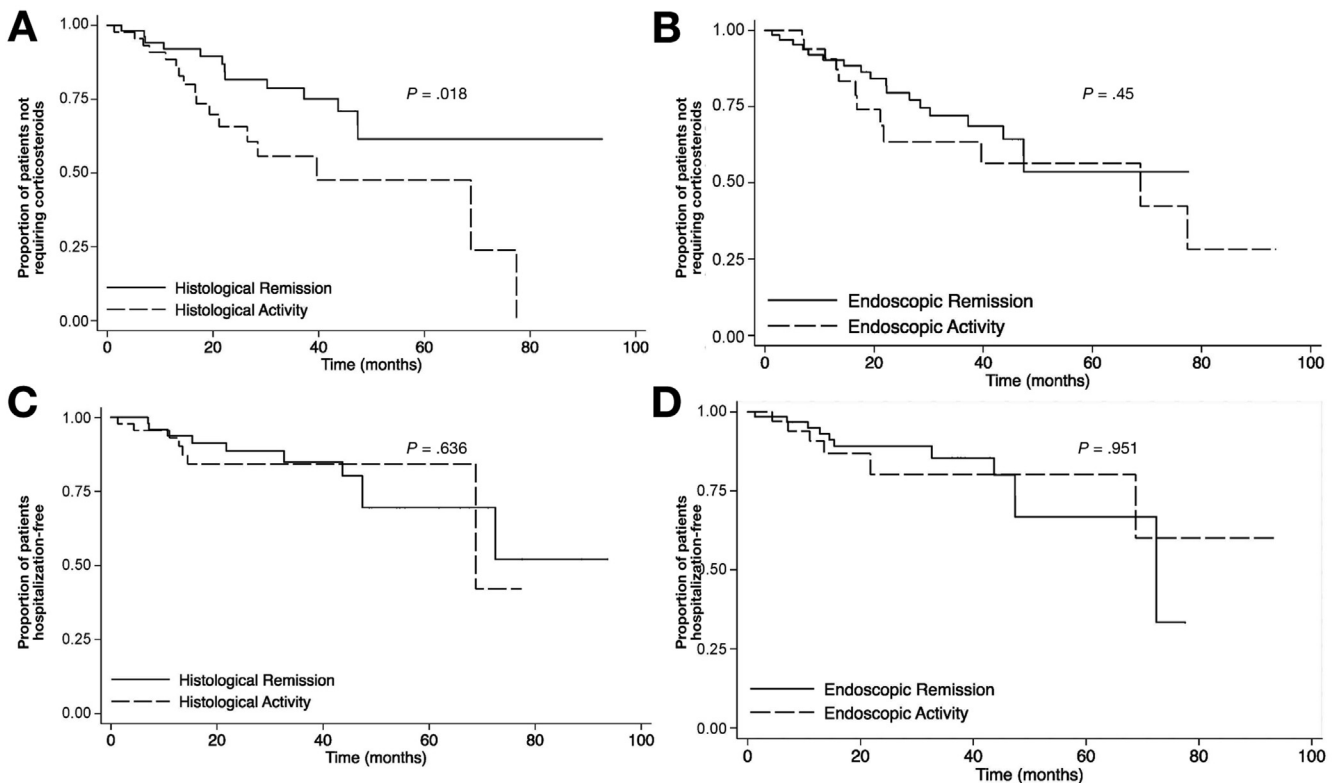


Figure 3. Kaplan-Meier analysis of effect of endoscopic and histologic activity on (A) corticosteroid-free survival versus histologic healing, (B) corticosteroid-free survival versus endoscopic healing, (C) hospitalization-free survival versus histologic healing, and (D) hospitalization-free survival versus endoscopic healing.

determine how they compare with histologic and endoscopic assessment alone.

In conclusion, we have demonstrated in patients with CD restricted to the terminal ileum the potential for histologic healing to act as a prognostic marker. It is associated with improved clinical outcomes, less chance of clinical relapse, and decreased need for medication escalation. We propose that histologic assessment of healing should be part of endoscopic assessment in CD. However, there is a clear need for standardized and validated histologic indices in CD, and the prognostic value of their application to CD affecting the colon and rectum requires evaluation.

Supplementary Material

Note: To access the supplementary material accompanying this article, visit the online version of *Clinical Gastroenterology and Hepatology* at www.cghjournal.org, and at <https://doi.org/10.1016/j.cgh.2019.11.056>.

References

1. Pariente B, Cosnes J, Danese S, et al. Development of the Crohn's disease digestive damage score, the Lemann score. *Inflamm Bowel Dis* 2011;17:1415–1422.
2. Cosnes J, Cattan S, Blain A, et al. Long-term evolution of disease behavior of Crohn's disease. *Inflamm Bowel Dis* 2002;8:244–250.
3. Solem CA, Loftus EV Jr, Tremaine WJ, et al. Correlation of C-reactive protein with clinical, endoscopic, histologic, and radiographic activity in inflammatory bowel disease. *Inflamm Bowel Dis* 2005;11:707–712.
4. Rutgeerts P, Diamond RH, Bala M, et al. Scheduled maintenance treatment with infliximab is superior to episodic treatment for the healing of mucosal ulceration associated with Crohn's disease. *Gastrointest Endosc* 2006;63:433–442, quiz 464.
5. Schnitzler F, Fidler H, Ferrante M, et al. Mucosal healing predicts long-term outcome of maintenance therapy with infliximab in Crohn's disease. *Inflamm Bowel Dis* 2009;15:1295–1301.
6. Rutgeerts P, Feagan BG, Lichtenstein GR, et al. Comparison of scheduled and episodic treatment strategies of infliximab in Crohn's disease. *Gastroenterology* 2004;126:402–413.
7. Colombel JF, Rutgeerts PJ, Sandborn WJ, et al. Adalimumab induces deep remission in patients with Crohn's disease. *Clin Gastroenterol Hepatol* 2014;12:414–422 e5.
8. Molander P, Sipponen T, Kempainen H, et al. Achievement of deep remission during scheduled maintenance therapy with TNFalpha-blocking agents in IBD. *J Crohns Colitis* 2013;7:730–735.
9. Riley SA, Mani V, Goodman MJ, et al. Microscopic activity in ulcerative colitis: what does it mean? *Gut* 1991;32:174–178.
10. Bryant RV, Burger DC, Delo J, et al. Beyond endoscopic mucosal healing in UC: histological remission better predicts corticosteroid use and hospitalisation over 6 years of follow-up. *Gut* 2016;65:408–414.
11. Christensen B, Hanauer SB, Erlich J, et al. Histologic normalization occurs in ulcerative colitis and is associated with

- improved clinical outcomes. *Clin Gastroenterol Hepatol* 2017; 15:1557–1564 e1.
12. Peyrin-Biroulet L, Sandborn W, Sands BE, et al. Selecting Therapeutic Targets in Inflammatory Bowel Disease (STRIDE): determining therapeutic goals for treat-to-target. *Am J Gastroenterol* 2015;110:1324–1338.
 13. Mantzaris GJ, Christidou A, Sfakianakis M, et al. Azathioprine is superior to budesonide in achieving and maintaining mucosal healing and histologic remission in steroid-dependent Crohn's disease. *Inflamm Bowel Dis* 2009;15:375–382.
 14. D'Haens G, Van Deventer S, Van Hogezaand R, et al. Endoscopic and histological healing with infliximab anti-tumor necrosis factor antibodies in Crohn's disease: a European multicenter trial. *Gastroenterology* 1999;116:1029–1034.
 15. Bryant RV, Winer S, Travis SP, et al. Systematic review: histological remission in inflammatory bowel disease—is 'complete' remission the new treatment paradigm? an IOIBD initiative. *J Crohns Colitis* 2014;8:1582–1597.
 16. Li K, Friedman JR, Chan D, et al. Effects of ustekinumab on histologic disease activity in patients with Crohn's disease. *Gastroenterology* 2019;157:1029–1031.
 17. Danese S, Sandborn WJ, Colombel JF, et al. Endoscopic, radiologic, and histologic healing with vedolizumab in patients with active Crohn's disease. *Gastroenterology* 2019; 157:1007–1018.e7.
 18. Rubin DT, Huo D, Kinnucan JA, et al. Inflammation is an independent risk factor for colonic neoplasia in patients with ulcerative colitis: a case-control study. *Clin Gastroenterol Hepatol* 2013;11:1601–1608 e1–e4.
 19. Brennan GT, Melton SD, Spechler SJ, et al. Clinical implications of histologic abnormalities in ileocolonic biopsies of patients with Crohn's disease in remission. *J Clin Gastroenterol* 2017; 51:43–48.
 20. Baars JE, Nuij VJ, Oldenburg B, et al. Majority of patients with inflammatory bowel disease in clinical remission have mucosal inflammation. *Inflamm Bowel Dis* 2012;18:1634–1640.
 21. Naini BV, Cortina G. A histopathologic scoring system as a tool for standardized reporting of chronic (ileo)colitis and independent risk assessment for inflammatory bowel disease. *Hum Pathol* 2012;43:2187–2196.
 22. Harvey RF, Bradshaw JM. A simple index of Crohn's-disease activity. *Lancet* 1980;1:514.
 23. Jess T, Riis L, Vind I, et al. Changes in clinical characteristics, course, and prognosis of inflammatory bowel disease during the last 5 decades: a population-based study from Copenhagen, Denmark. *Inflamm Bowel Dis* 2007;13:481–489.
 24. Vuitton L, Peyrin-Biroulet L, Colombel JF, et al. Defining endoscopic response and remission in ulcerative colitis clinical trials: an international consensus. *Aliment Pharmacol Ther* 2017; 45:801–813.
 25. Sands BE, Sandborn WJ, Panaccione R, et al. Ustekinumab as induction and maintenance therapy for ulcerative colitis. *N Engl J Med* 2019;381:1201–1214.
 26. Korelitz BI, Sommers SC. Response to drug therapy in Crohn's disease: evaluation by rectal biopsy and mucosal cell counts. *J Clin Gastroenterol* 1984;6:123–127.
 27. Laharie D, Reffet A, Belleannee G, et al. Mucosal healing with methotrexate in Crohn's disease: a prospective comparative study with azathioprine and infliximab. *Aliment Pharmacol Ther* 2011;33:714–721.
 28. Geboes K, Rutgeerts P, Opdenakker G, et al. Endoscopic and histologic evidence of persistent mucosal healing and correlation with clinical improvement following sustained infliximab treatment for Crohn's disease. *Curr Med Res Opin* 2005; 21:1741–1754.
 29. Serban ED. Treat-to-target in Crohn's disease: will transmural healing become a therapeutic endpoint? *World J Clin Cases* 2018;6:501–513.
-
- Reprint requests**
Address requests for reprints to: Britt Christensen, The Royal Melbourne Hospital, Gastroenterology Department, 300 Grattan Street, Parkville, Victoria, Australia 3050. e-mail: britt.christensen@mh.org.au; fax: +61-3-9342-7848. Q1Q2
- CRedit Authorship Contributions**
Britt Christensen (Conceptualization: Lead; Data curation: Lead; Formal analysis: Lead; Investigation: Lead; Writing – original draft: Lead; Writing – review & editing: Lead)
Jonathan Erlich (Data curation: Equal; Writing – original draft: Equal)
Peter R. Gibson (Conceptualization: Equal; Writing – original draft: Equal; Writing – review & editing: Equal)
Jerrold R. Turner (Validation: Equal; Writing – original draft: Supporting)
John Hart (Validation: Equal; Writing – original draft: Supporting)
David T. Rubin, MD (Conceptualization: Equal; Supervision: Lead; Writing – original draft: Equal; Writing – review & editing: Equal)
- Conflicts of interest**
The authors disclose no conflicts. Q3
- Funding**
Supported in part by the Digestive Disease Research Core Center of the University of Chicago (DK42086). Q5 Q4

Supplementary Table 1. Criteria Used to Distinguish Histologic Healing From Histologic Activity According to Modifications of the Ileal Global Histological Disease Activity Score¹⁴

Histologic healing	Histologic activity
None of the following:	Presence of any of the following:
<ul style="list-style-type: none"> ● Lamina propria infiltration by neutrophils ● Epithelial infiltration by neutrophils ● Crypt abscesses ● Erosions ● Ulcerations ● Granulomas 	<ul style="list-style-type: none"> ● Lamina propria infiltration by neutrophils ● Epithelial infiltration by neutrophils ● Crypt abscesses ● Erosions ● Ulcerations ● Granulomas

986
987
988
989
990
991
992
993
994
995
996
997
998
999
1000
1001
1002
1003
1004
1005
1006
1007
1008
1009
1010
1011
1012
1013
1014
1015
1016
1017
1018
1019
1020
1021
1022
1023
1024
1025
1026
1027
1028
1029
1030
1031
1032
1033
1034
1035
1036
1037
1038
1039
1040
1041
1042